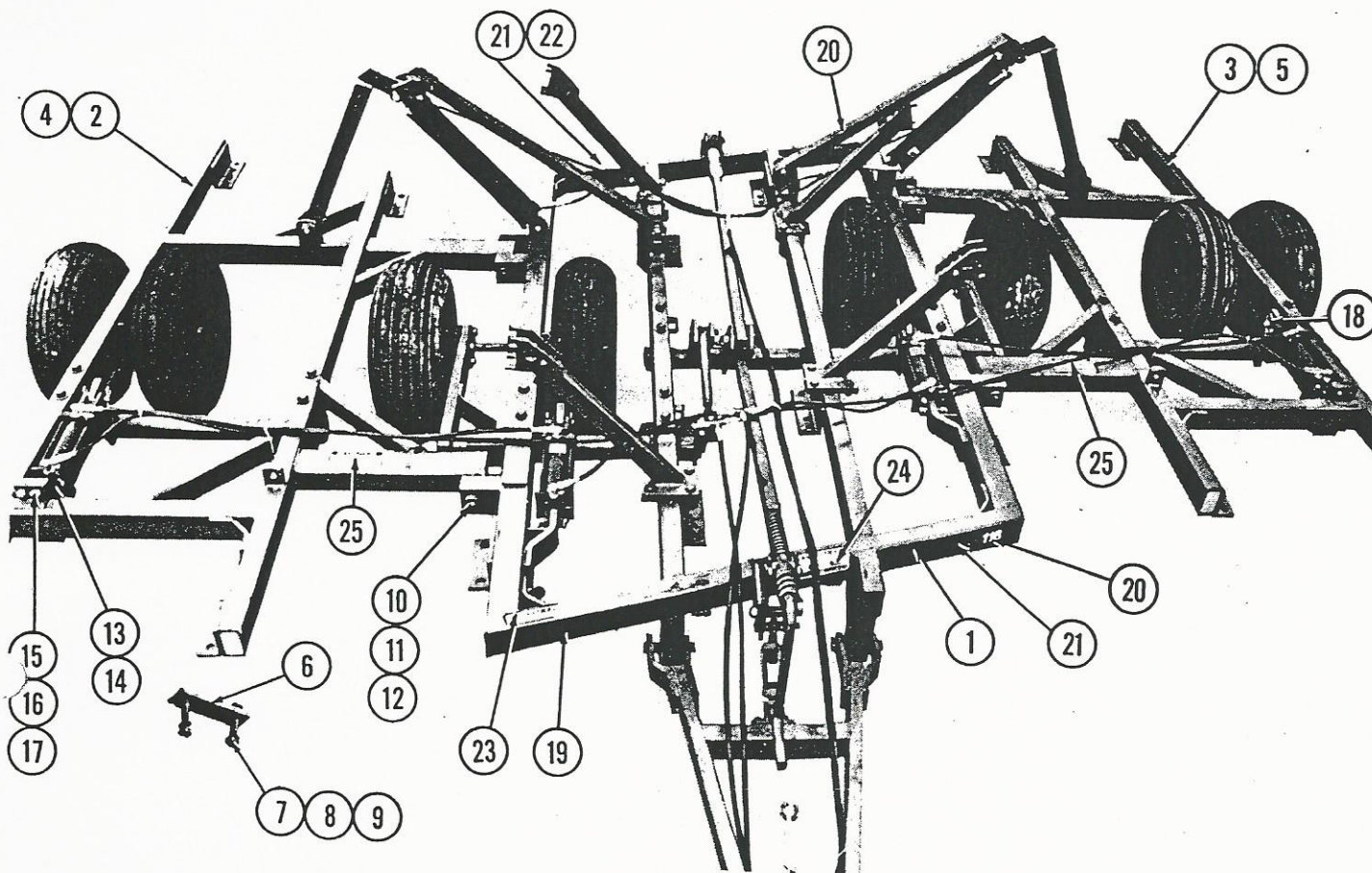




Parts Listing

Table of Contents

DESCRIPTION	PAGE NUMBER
Cover Disks	61
Decals and Serial Plate	45
Disk Gang Components	53-55
Hydraulic Hoses and Fittings	60
Hydraulics, Folding	59
Hydraulics, Lifting	58
Mainframe	45
Self-Leveling Parts, Frame	51
Scrapers and Scraper Bars	56-57
Tongue	46
Transport Parts	51
Wheel Carriages	47-48
Wheel Hub and Wheels	49-50
Wing Folding Parts	52
Wing Transport Parts	52

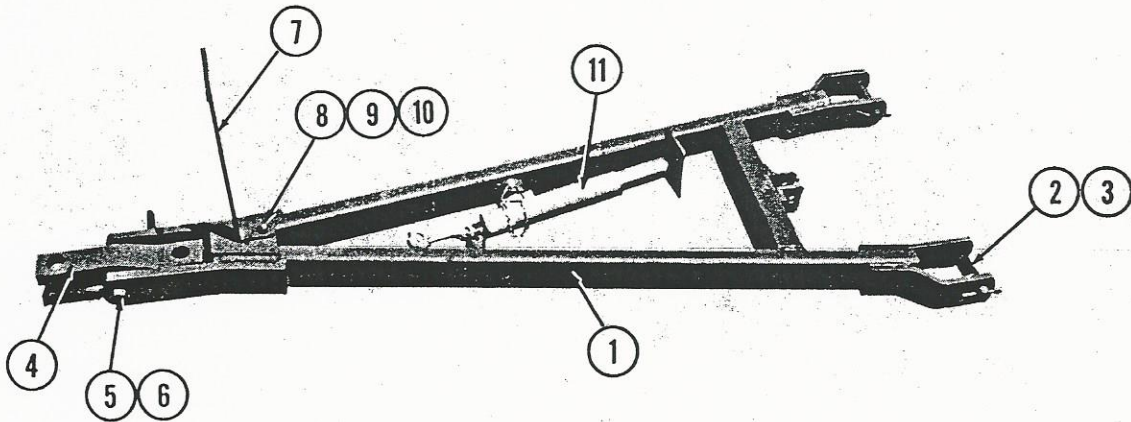


FRAME AND WING PARTS

DECALS

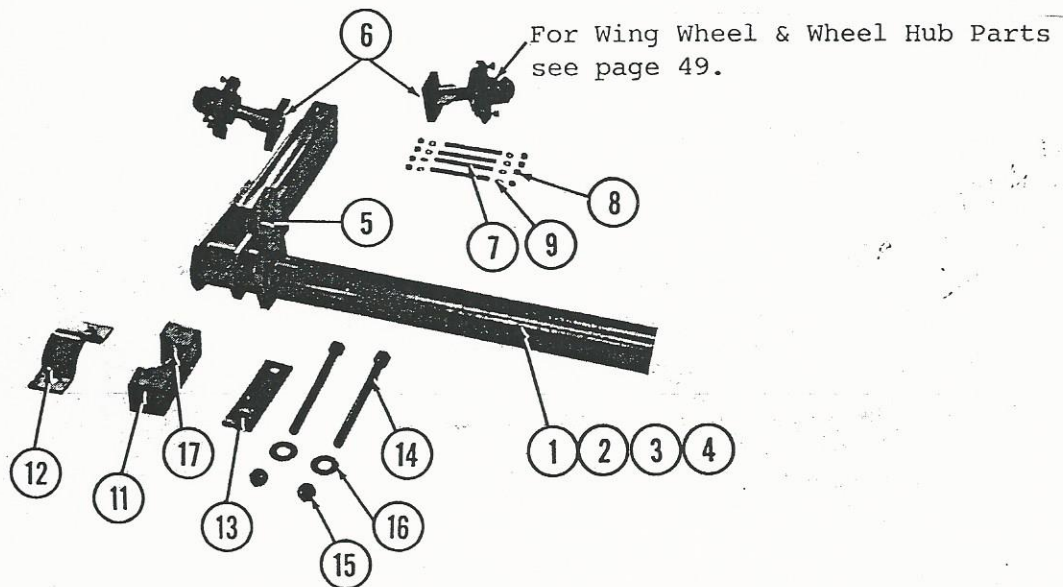
ITEM NO.	PART NO.	QTY	DESCRIPTION
1	21345	1	Main Frame
2	21476	1	Rt. Narrow Wing
3	21477	1	Lt. Narrow Wing
4	21468	1	Rt. Wide Wing
5	21469	1	Lt. Wide Wing
6	21465	16	Gang Fr Atch Plt
7	80200	32	7/8 x 6 Hex Bolt GR5
8	80645	32	7/8 Hex Nut
9	81030	32	7/8 Lock Washer
10	19403	4	Wing Pivot Pin
11	80114	4	1/2 x 2-3/4 Hex Bolt
12	80864	4	1/2 Locknut
13	19991	2	Wing Cyl Anch
14	19997	8	Leveling Shim
15	80134	8	5/8 x 2-1/2 Hex Bolt
16	80605	8	5/8 Hex Nut

ITEM NO.	PART NO.	QTY	DESCRIPTION
19	99102	2	Athens Decal
20	98116	2	*116 Decal
	98118	2	*118 Decal
	*Two of one or the other		
21	999002	2	Athens Decal
22	999205	1	General Warning
23	999204	1	Warning (Lifted Units)
24	999200	2	Warning (Folded Wings)
25	999202	2	Warning (Wing Clearance)



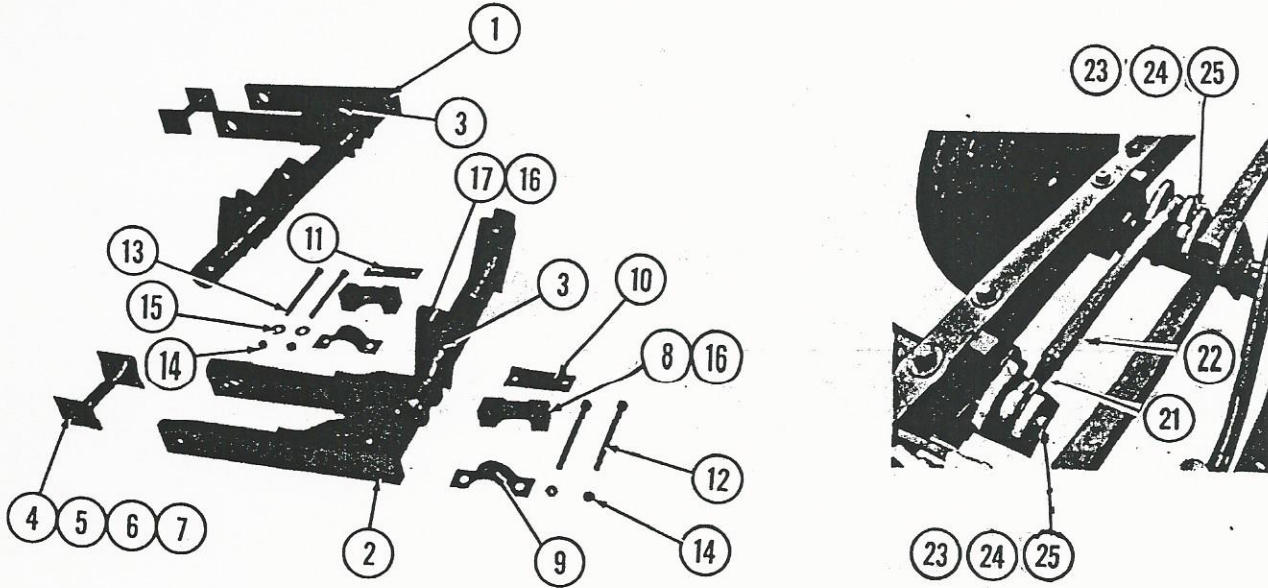
TONGUE PARTS

ITEM NO.	PART NO.	QTY	DESCRIPTION
1	21367	1	Tongue
2	19462	2	Tongue Pin
3	81425	4	3/8 x 3 Cotter
4	20004	1	Clevis
5	18856	1	1 x 7 Hex Bolt
6	80880	1	1" Locknut
7	21273	1	Hose Stand
8	80109	1	1/2 x 1-1/2 Hex Bolt
9	80585	1	1/2 Hex Nut
10	81000	1	1/2 Lock Washer
11	19753	1	Parking Jack



WING WHEEL CARRIAGES

ITEM NO.	PART NO.	Quantity		DESCRIPTION
		Narrow	Wide	
1	21384	1		Rt. Narrow Wing W/C
2	21385	1		Lt. Narrow Wing W/C
3	21382		1	Rt. Wide Wing Wh Crg
4	21383		1	Lt. Wide Wing Wh Crg
5	18852	2	2	Drl Ram Anchor Bshg
6	19056	2		Backup Plate (Narrow Wings Only) Not Shown)
7	19531	8	8	Wheel Axle Stud
8	80585	16	16	Hex Nut
9	81000	16	16	1/2 Lock Washer
10	15792	2	4	15 x 6, 5-Lug Wheel (See page 49)
11	15917	4	4	Wh Crg Pivot Cst
12	15925	4	4	Wh Crg Strap
13	21467	4	4	Spacer - 3" Tube
14	16841	8	8	7/8 x 10 Hex Bolt
15	80875	8	8	7/8 Locknut
16	81210	8	8	7/8 Flatwasher
17	11610	6	6	1/8 NPT Gr Ftg



WHEEL CARRIAGES FOR CENTER SECTIONS

ITEM NO.	PART NO.	QTY	DESCRIPTION
1	21375	1	Lt. Base Wh Crg
2	21380	1	Rt. Base Wh Crg
3	18852	2	Drl Ram Anch Bshg
4	21484	2	W/C Drop Leg Spacer
5	80176	16	3/4 x 4-1/2 Hex Bolt (Not Shown)
6	80620	16	3/4 Hex Nut (Not Shown)
7	81020	16	3/4 Lock Washer (Not Shown)
8	15917	4	W/C Pivot Casting
9	15925	4	W/C Strap
10	21466	2	Spacer - (3-1/2")
11	21467	2	Spacer - (2-1/2")
12	21390	4	7/8 x 11 Hex Bolt
13	16841	4	7/8 x 10 Hex Bolt
14	80875	8	7/8 Locknut
15	81210	4	7/8 Flatwasher
16	11610	6	1/8 NPT Gr Ftg
21	21271	1	Adjusting Rod
22	21269	1	Adjusting Tube
23	21267	2	Turnbuckle Pin
24	20284	2	Clip Pin
25	21266	2	Lock Pin

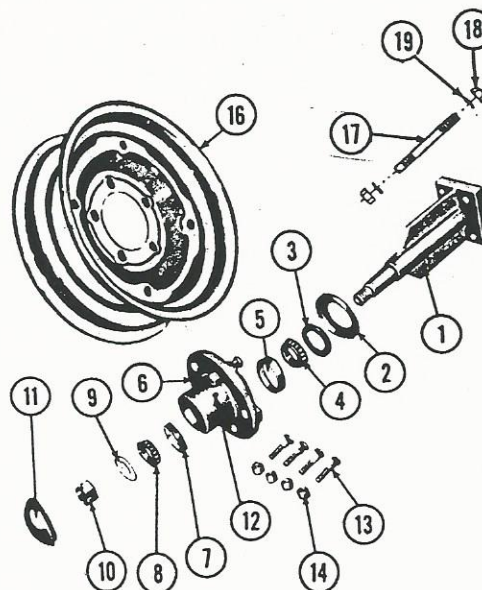


Parts Listing

Section 5

WING WHEEL AND WHEEL HUB PARTS

ITEM NO.	PART NO.	QTY	DESCRIPTION
1	19384	*4	Wheel Axle Assembly
	81375	*4	3/16" x 2-1/2" Cotter
2	19076	*4	Flinger
3	19153	*4	Triple-lip Seal
4	70045	*4	Inside Bearing Cone (Timken LM48548)
5	70044	*4	Inside Bearing Cup (Timken LM48510)
6	900079	*4	Wheel Hub w/Cups and Wheel Bolts
7	70048	*4	Outside Bearing Cup (Timken LM67010)
8	70049	*4	Outside Bearing Cone (Timken LM67048)
9	81230	*4	1" SAE Washer
10	80715	*4	1" Hex Slotted Nut w/Fine Thread
11	19075	*4	Hub Cap
12	11610	*4	Grease Fitting
13	13198	*20	Wheel Bolt
14	15793	*20	Wheel Bolt Nut
15	19056	**2	Back-up Plate
16	15792	*4	15" x 6" Wheel
17	19531	*8	Wheel Axle Stud
18	80585	16	1/2" Hex Nut
19	81000	16	1/2" Lock Washer

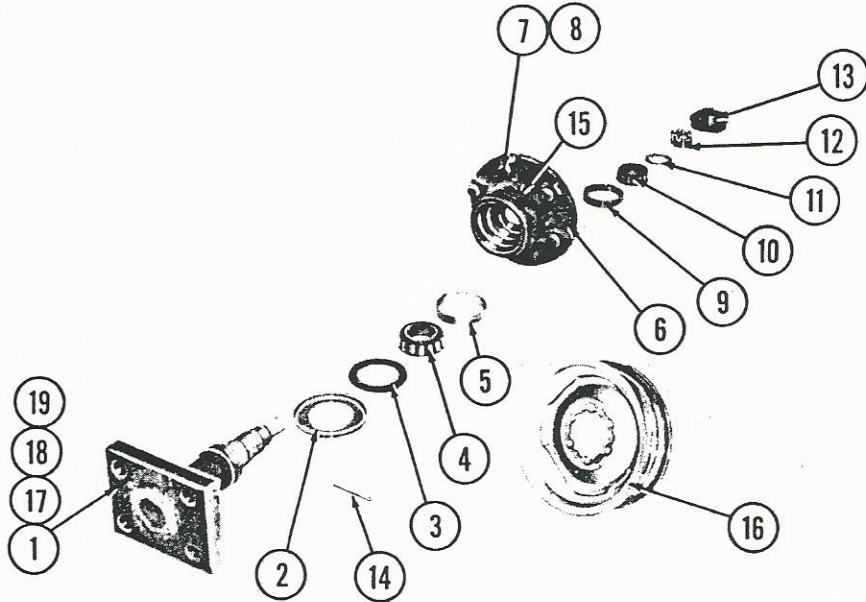


*Units with Narrow Wings with Single Wheels use 1/2 of these quantities.

NOTE: Narrow Wing Units with Dual Wheels use same quantities as shown above.

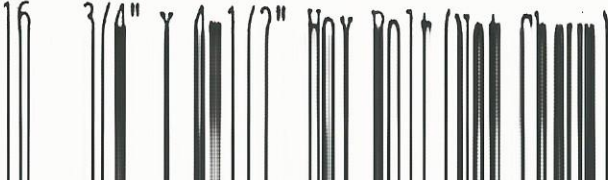
*15' Units use 1/2 of these quantities and cannot use Dual Wheels without leaving tracks.

**15' Units only. Used with units without Dual Wheels.



WHEEL AND WHEEL HUB PARTS
FOR CENTER SECTION

ITEM NO.	PART NO.	QTY	DESCRIPTION
1	19022	4	Wheel Axle
2	19019	4	Press-on Flinger
3	19021	4	Triple-lip Seal
4	70002	4	Bearing Cone (Timken #342)
5	70000	4	Bearing Cup (Timken #332)
6	900076	4	Six-Lug Wheel Hub w/Cups and Bolts
7	13198	24	Wheel Bolt
8	15793	24	Wheel Bolt Nut
9	70025	4	Bearing Cup (Timken #14276)
10	70024	4	Bearing Cone (Timken #14137A)
11	81230	4	1" SAE Flatwasher
12	80715	4	1" Hex Slotted Nut w/NFT
13	19020	4	Hub Cap
14	81360	4	3/16" x 1-1/2" Cotter
15	11610	4	1/8" NPT Grease Fitting
16	18184	4	15 x 8 Wheel
17	80176	16	3/4" x 1-1/2" Hex Bolt



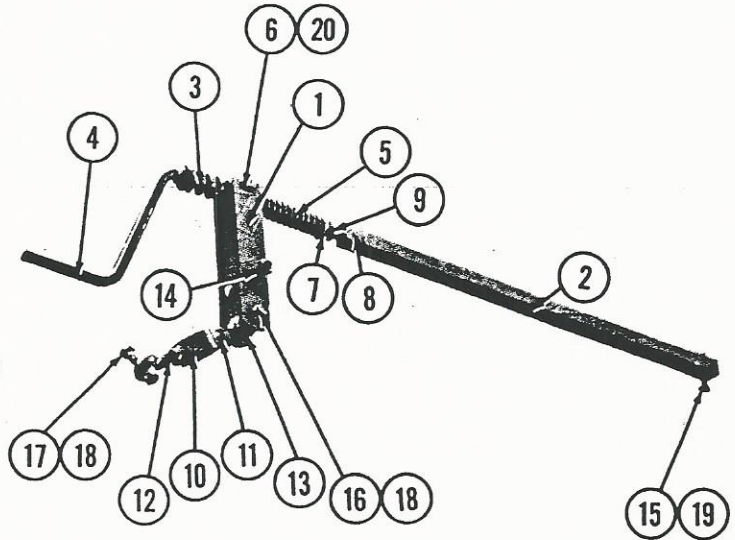


Parts Listing

Section 5

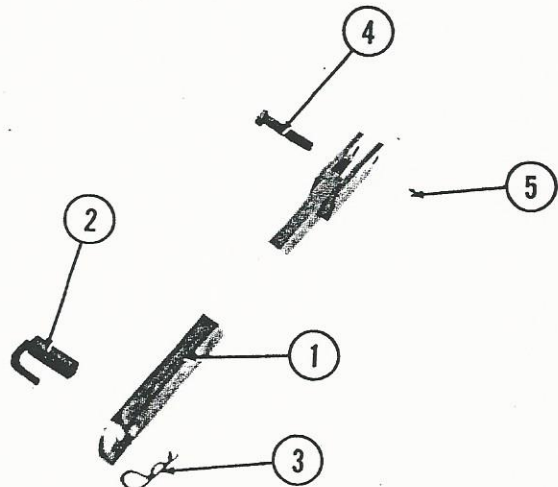
FRAME/TONGUE LEVELING PARTS

ITEM NO.	PART NO.	QTY	DESCRIPTION
1	21015	1	Self-Leveling Pivot
2	21463	1	Leveling Tube
3	16917	1	Spring (Front)
4	21276	1	Crank
5	15729	1	Spring
6	15709	1	Plain Trunnion
7	81245	4	1-1/4 SAE Washer
8	81681	1	1/4 x 1-1/4 Roll Pin
9	80755	2	1-1/4 Jam Nut
10	21702	1	Turnbuckle Body
11	21004	1	Turnbuckle End, Rt.
12	21005	1	Turnbuckle End, Lt.
13	21071	2	Turnbuckle Bushing
14	21168	1	7/8 x 6 Hex Bolt
15	80176	1	3/4 x 4-1/2 Hex Bolt
16	80197	1	7/8 x 5 Hex Bolt
17	80189	1	7/8 x 3-1/2 Hex Bolt
18	80875	3	7/8 Locknut
19	80870	1	3/4 Locknut
20	11610	4	1/8 NPT Gr Ftg



MECHANICAL TRANSPORT PARTS

ITEM NO.	PART NO.	QTY	DESCRIPTION
1	21493	1	Transport Tube
2	21705	1	Transport Pin
3	12507	1	Ø. H. Pin
4	80196	1	7/8 x 5 Hex Bolt
5	80875	1	7/8 Locknut



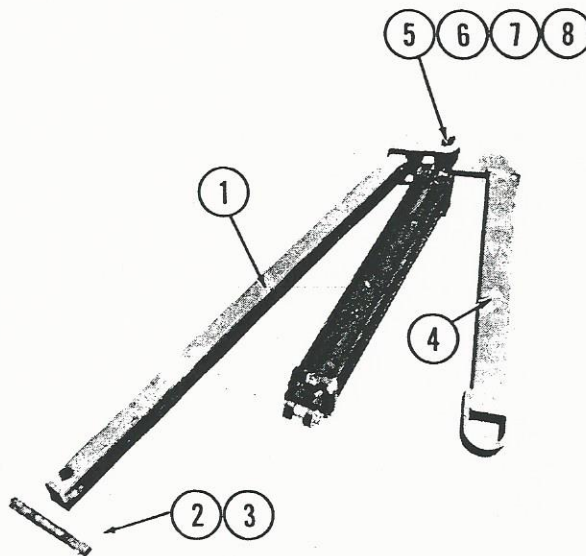


Parts Listing

Section 5

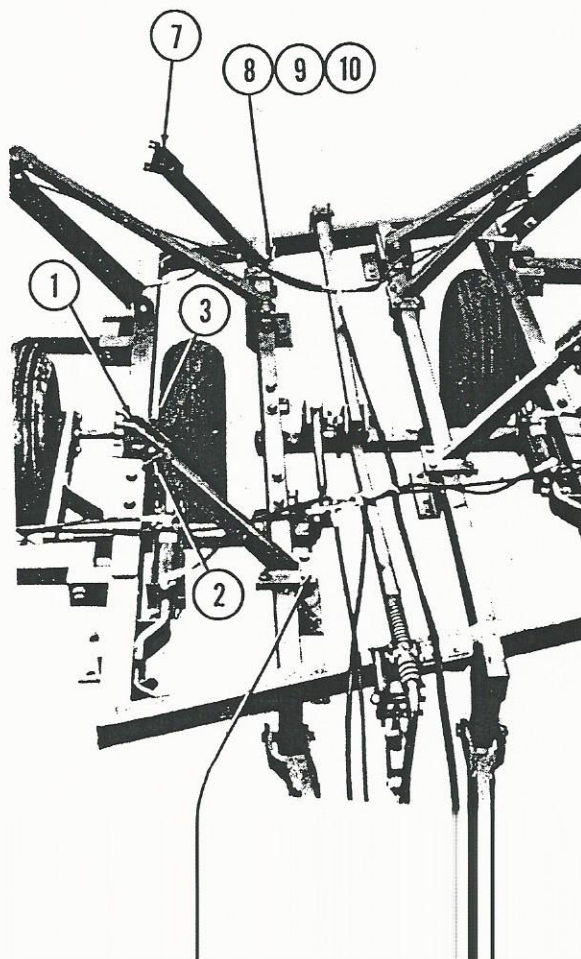
WING FOLDING PARTS

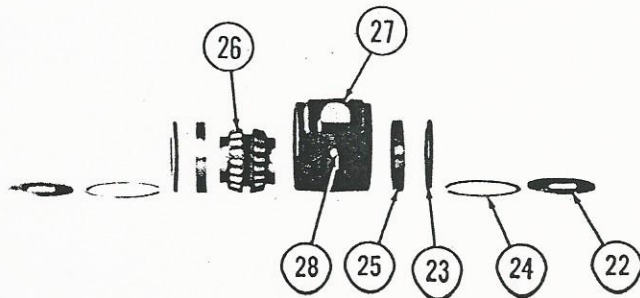
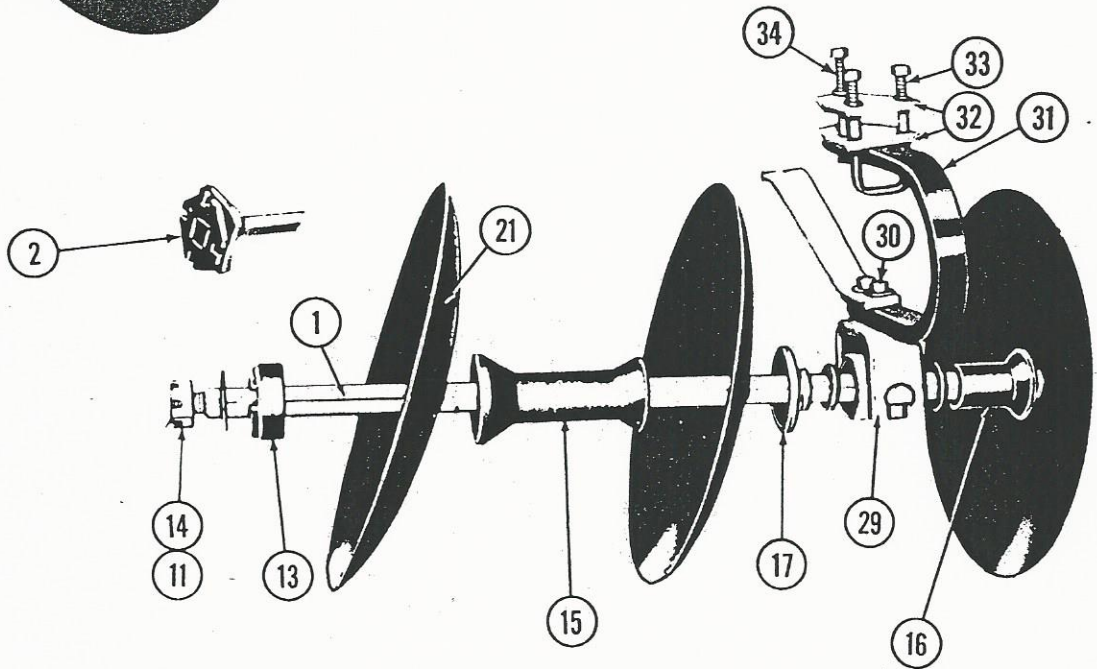
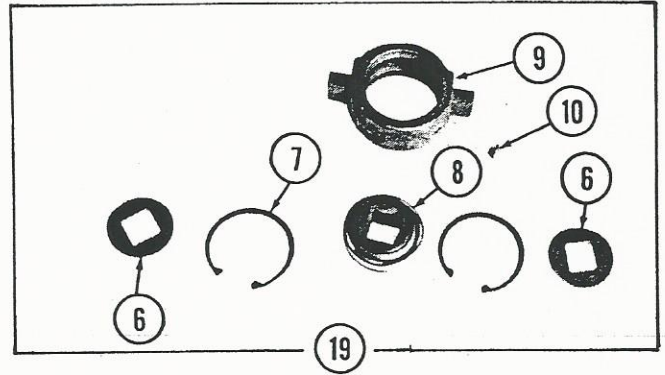
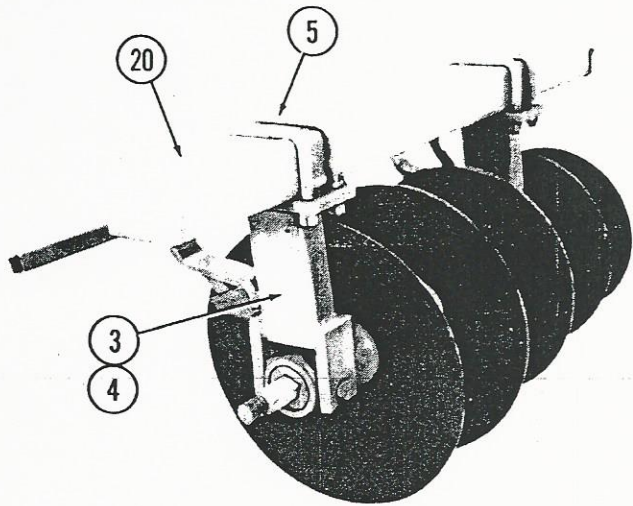
ITEM NO.	PART NO.	QTY	DESCRIPTION
1	19512	2	Wing Folding Arm Assembly
2	19428	2	Wing Folding Pivot Pin
3	81425	4	3/8 x 3 Cotter
4	19513	2	Cylinder Stabilizer Assembly
5	19402	2	Base Folding Pivot Pin
6	80104	2	3/8 x 2 Regular Hex Bolt
7	80570	2	3/8 Hex Nut
8	80985	2	3/8 Lock Washer



WING TRANSPORTS PARTS

ITEM NO.	PART NO.	QUANTITY		DESCRIPTION
		Narrow	Wide	
1	21359	2	2	Front Wing Transport
2	21845	2	2	Pin
3	12057	2	2	Hitch Pin
4	80161	8	8	3/4 x 2-1/2 Hex Bolt
5	80620	8	8	3/4 Hex Nut
6	81020	8	8	3/4 Lock Washer
7	21360	2		Rear Wing Transport
8	19518	4		U-Bolt
9	80620	8		3/4 Hex Nut
10	81020	8		3/4 Lock Washer





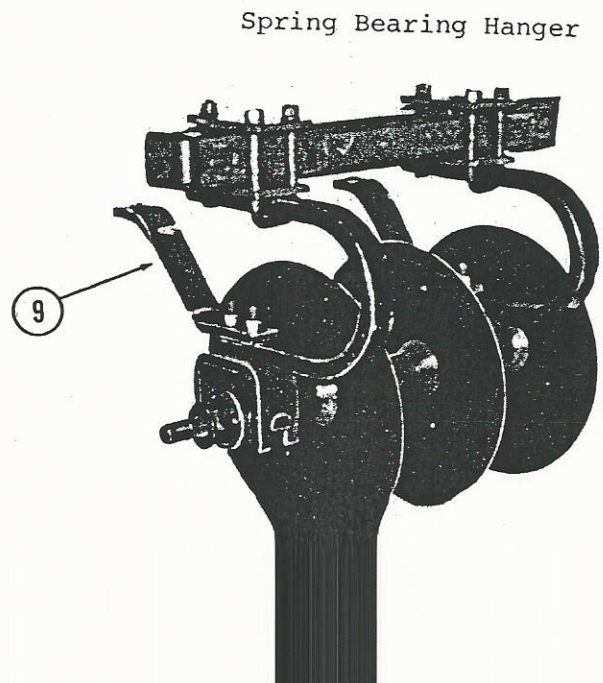
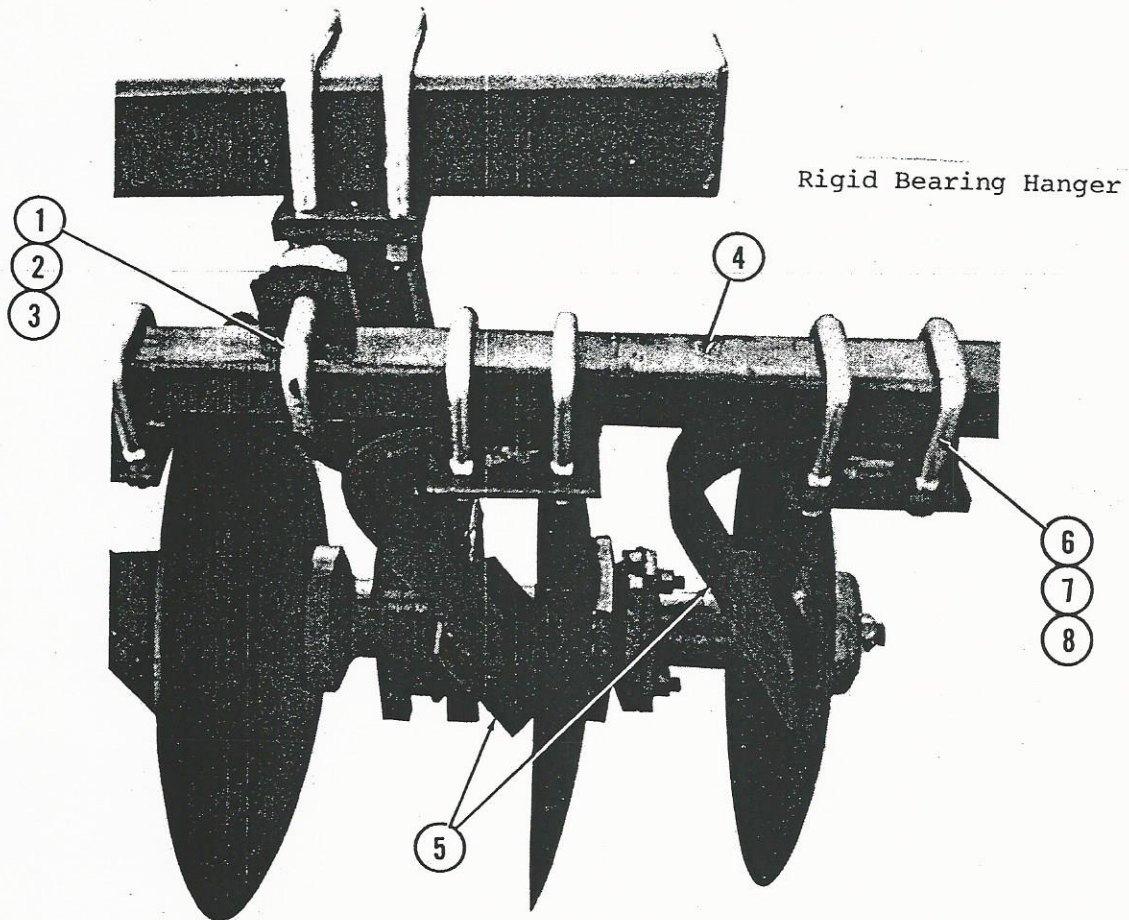


Parts Listing

Section 5

"118" DISK GANG REPAIR PARTS

ITEM NO.	PART NO.	QUANTITY 7-1/2" SPACING					QUANTITY 9" SPACING					QUANTITY 9" FT. 7-1/2" REAR					DESCRIPTION	
		52	60	68	72	80	44	52	56	60	68	48	56	62	66	74		
1	19965	2				2											5 X 7-1/2 AXLE 32.69	
	19963	2	4	2	2	6						2	2	2	2	4	7 X 7-1/2 AXLE 47.69	
	19967	2	2	2	2	2											8 X 7-1/2 AXLE 55.19	
	19970				2												10 X 7-1/2 AXLE 70.25	
	19961						2					2					4 X 9 AXLE 29.69	
	19962															2	5 X 9 AXLE 38.69	
	19963						2	4	2	2	4		2				6 X 9 AXLE 47.69	
	19964						2	2	4	2	2	2	2	4	2	2	7 X 9 AXLE 56.69	
	19968									2					2		8 X 9 AXLE 65.75	
	21109										2					2	10 X 9 AXLE 83.75	
2	19979	2				2						2				2	6 X 7-1/2 C.D. AXLE	
	19980		2										2				8 X 7-1/2 C.D. AXLE	
	19982				2										2		11 X 7-1/2 C.D. AXLE	
	19973						2				2						5 X 9 C.D. AXLE	
	19975							2									7 X 9 C.D. AXLE	
	19977									2							9 X 9 C.D. AXLE	
	21453			2													9 X 7-1/2 AXLE (62.69)	
	19981			2											2		10 X 7-1/2 C.D. AXLE	
	19976										2						8 X 9 C.D. AXLE	
11	19948	8	8	8	8	12	8	8	8	8	12	8	8	8	8	12	DISK ASSY. NUT	
12	16437						AS REQUIRED										END WASHER SPACER	
13	19933	8	8	8	8	12	8	8	8	8	12						12	END WASHER
14	81395	8	8	8	8	12	8	8	8	8	12	8	8	8	8	12	1/4 X 2-1/2 CUTTER	
15	19934						20	28	30	32	36	10	14	16	16	20	FULL SPCR 9	
	19935	28	36	40	44	48						14	18	20	22	22	FULL SPCR 7.5	
-16	19931						16	16	18	20	22	8	8	8	10	10	CNVX. HALF SPCR, 9	
	19936	16	16	20	20	24						8	8	10	10	12	CNVX. HALF SPCR, 7.5	
-17	19932	16	16	20	20	24	16	16	18	20	22	16	16	18	20	22	CONCV. HALF SPCR,	
18	21310	1	1	1	1	1	1	1	1	1	1	1	1	1	1	1	GANG & LEV. WRENCH	
20	21691	2					2					2					GANG FRAME 37.00	
	21692	2	2				2	2				2	2				GANG FRAME 46.00	
	21693	4	4	4	4	4	4	4	4	4	4	4	4	4	4	4	GANG FRAME 56.00	
	21694		2		2			2		2			2		2		GANG FRAME 65.00	
	21305				2	2				2	2				2	2	GANG FRAME 90.00	
	21303					2					2				2	2	GANG FRAME 108.00	
	21302		2							2					2		GANG FRAME 61.00	
	21307		2							2					2		GANG FRAME 70.00	
21	19917	- 22 X	.203 CO;	19919	- 20 X	.180 CO;											OPTIONAL DISK	
	19921	- 18 X	.134 CO;	19916	- 22 X	.203 SM;											OPTIONAL DISK	
	19918	- 20 X	.180 SM;	19920	- 18 X	.134 SM;											(ALSO COVER DISK 2/24" DISKS)	
	21205	- 22 X	.165 CO;	21204	- 22 X	.165 SM;											OPTIONAL DISK	
	21158	- 24 X	.188 CO;	21159	- 24 X	.188 SM;											OPTIONAL DISK	
	18693	- 16 X	.134 SM.														(COVER DISK ONLY W/ 22" DISKS)	
22	*19983	32	32	40	40	44	32	32	36	40	44	32	32	36	40	44	BEARING WASHER	
23	*19985	32	32	40	40	44	32	32	36	40	44	32	32	36	40	44	TRI-PLY SEAL	
24	*19984	32	32	40	40	44	32	32	36	40	44	32	32	36	40	44	SNAP RING	
25	*70054	32	32	40	40	44	32	32	36	40	44	32	32	36	40	44	BRG CUP (LM501310)	
26	*70053	16	16	20	20	22	16	16	18	20	22	16	16	18	20	22	BRG CONE (LM501334SD)	
27	*19937	16	16	20	20	22	16	16	18	20	22	16	16	18	20	22	BRG. HSG.	
28	*11610	16	16	20	20	22	16	16	18	20	22	16	16	18	20	22	GREASE FTG.	
	920432	(2)	22,	(2)	23,(2)	24,(2)	25,(1)	26,(1)	27,(1)	28							QUADRASEALL (R) BEAR COMPLETE	
29	19947	16	16	20	20	22	16	16	18	20	22	16	16	18	20	22	BRG. CUFF	
30	80333	32	32	40	40	44	32	32	36	40	44	32	32	36	40	44	5/8 X 3-1/2 C. BLT.G5	
	80865	32	32	40	40	44	32	32	36	40	44	32	32	36	40	44	5/8/ LOCKNUT	
	81015	80	80	100	100	110	80	80	100	100	110	80	80	96	100	110	5/8 LOCK WASHER	
31	19527	16	16	20	20	22	16	16	18	20	22	16	16	18	20	22	SPRING BRG. HGR.	
32	19525	32	32	40	40	44	32	32	36	40	44	32	32	36	40	44	CLAMP PLATE	
33	19526	16	16	20	20	22	16	16	18	20	22	16	16	18	20	22	BRG, HGR U BOLT	





Parts Listing

Section 5

"116" SCRAPERS AND SCRAPER BARS (Rigid Bearing Hangers)

Item No.	Part No.	QUANTITY 7-1/2" SPACING					QUANTITY 9" SPACING					QUANTITY 9" FT. 7-1/2" REAR					Description
		52	60	68	72	80	44	52	56	60	68	48	56	62	66	74	
1	20676	16	16	20	20	20	16	16	18	20	20	16	16	18	20	20	SCPR. BAR HGR U BOLT
2	81015	32	32	40	40	40	32	32	36	40	40	32	32	36	40	40	5/8 LOCK WASHER
3	80865	32	32	40	40	40	32	32	36	40	40	32	32	36	40	40	5/8 LOCKNUT
4	20684	2					2					2					SCRAPER BAR (32.00)
	20729	2	4	2	2	2	2	4	2	2	2	2	4	2	2	2	SCRAPER BAR (47.00)
	20730	2					2					2					SCRAPER BAR (54.50)
	20731	2	2	4	2	2	2	2		2	2	2	4	2	2	2	SCRAPER BAR (61.00)
	20732		2		2				2		2		2				SCRAPER BAR (69.50)
	20736					2				2						2	SCRAPER BAR (88.00)
	20737				2					2					2		SCRAPER BAR (91.00)
	20739					2				2					2	2	SCRAPER BAR (110.00)
	20735			2									2				SCRAPER BAR (83.00)
5	20690	24	28	32	34	38	20	24	26	28	32	22	26	29	31	35	LT. FT. RT RR. SCPR.
	20689	24	28	32	34	38	20	24	26	28	32	22	26	29	31	35	RT. FT.LT. RR. SCPR.
6	*20677	96	112	128	136	152	80	96	104	112	128	88	104	116	124	140	*SCPR. U BOLT
7	80864	192	224	256	172	304	160	192	208	224	256	176	208	232	248	280	1/2 LOCKNUT ZP
8	81005	192	224	256	172	304	160	192	208	224	256	176	208	232	248	280	1/2 LOCK WASHER ZP

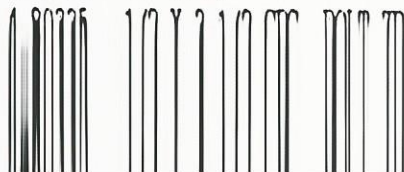
*TWO #20677 SCRAPER U-BOLTS PER SCRAPER WILL BE REPLACED IN 1984 WITH:
 1-21844 TOP PLATE
 4-80335 1/2 X 3-1/2 CRG. BOLT ZP.
 (NUTS AND LOCK WASHER ARE THE SAME.)

"118" SCRAPER BARS & SCRAPERS (Spring Bearing Hangers)

ITEM NO.	PART NO.	QUANTITY 7-1/2" SPACING					QUANTITY 9" SPACING					QUANTITY 9" FT. 7-1/2" REAR					DESCRIPTION
		52	60	68	72	80	44	52	56	60	68	48	56	62	66	74	
1	20676	16	16	20	20	24	16	16	18	20	24	16	16	18	20	24	SCPR. BAR HGR. U BOLT
2	81015	32	32	40	40	48	32	32	36	40	48	32	32	36	40	48	5/8 LOCK WASHER
3	80865	32	32	40	40	48	32	32	36	40	48	32	32	36	40	48	5/8 LOCKNUT
4	20684	2					2					2					SCRAPER BAR (32.00)
	20685					2											SCRAPER BAR (38.00)
	20686					4					4				4		SCRAPER BAR (43.00)
	20729	2	4	2	2	4	2	4	2	2	4	2	4	2	2	2	SCRAPER BAR (47.00)
	20730	2				4	2				4	2				4	SCRAPER BAR (54.50)
	20731	2	2	4	2	2	2	2	4	2	2	2	2	4	2	2	SCRAPER BAR (61.00)
	20732		2		2				2		2		2		2		SCRAPER BAR (69.50)
	20735			2					2		2			2			SCRAPER BAR (83.00)
	20737				2					2					2		SCRAPER BAR (91.00)
5	20690	24	28	32	34	38	20	24	26	28	32	22	26	29	31	35	LT. FT. LT. RR. SCPR.
	20689	24	28	32	34	38	20	24	26	28	32	22	26	29	31	35	RT. FT. LT. RR. SCPR.
6	*20677	96	112	128	136	152	80	96	104	112	128	88	104	116	124	140	*SCPR. U-BOLT
7	80864	192	224	256	272	304	160	192	208	224	256	176	208	232	248	280	1/2 LOCKNUT ZP
8	81005	192	224	256	272	304	160	192	208	224	256	176	208	232	248	280	1/2 LOCK WASHER ZP
9	20691	8	8	10	10	12	8	8	8	10	12	8	8	10	10	12	RT FT LT RR SCPR BR HGR
	20692	8	8	10	10	12	8	8	8	10	12	8	8	10	10	12	LT FT RT RR SCPR BR HGR

*TWO #20677 SCRAPER U-BOLTS PER SCRAPER WILL BE REPLACED IN 1984 WITH

1-21844 TOP PLATE





Parts Listing

Section 5

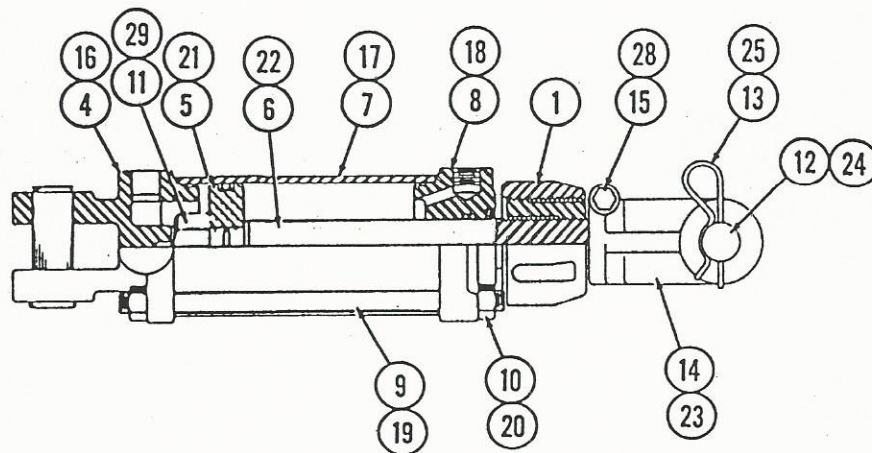
REPAIR PARTS FOR LIFTING CYLINDER

Parts for 4 x 8 Slave Cylinders
with Stroke Controls # 92021

Parts for 3 3/4" x 8 Slave Cylinders
92022

ITEM NO.	PART NO.	QTY	DESCRIPTION
1	95014 ⁹⁵²¹⁵	1	Stroke Control
4	95181	1	Butt 4.00 P
5	95184	1	Piston 4.00
6	95111 ⁹⁵²¹⁰	1	Rod 1.38 x 8.00
7	95182	1	Barrel 4.00 x 10.25
8	95183	1	Gland 4.00 x 1.38 P
9	95092	4	Tie Rod .62 x 13.50
10	80605	8	5/8" Hex Nut
11	80650	1	7/8-14 Nut (NFT)
12	95004	2	Clevis Pin (3.50)
13	95109	4	Clevis pin Clip
14	95185	1	Clevis 1.12-12 THD.
15		1	3/8 x 3/4 Socket Hd.
	95186 ⁹⁵²¹⁴	1	Packing Kit 4.00 x 1.38P

ITEM NO.	PART NO.	QTY	DESCRIPTION
16	95187	1	Butt 3.75
17	95188	1	Barrel 3.75 x 10.25
18	95189	1	Gland 3.75 x 1.38
19	95092	4	Tie Rod .62 x 13.50
20	80605	8	5/8" Hex Nut
21	95190	1	Piston 3.75
22	95191	1	Rod 1.38 x 8.00
23	95007	1	Clevis 1.12-12 THD.
24	95004	2	Clevis Pin (3.50)
25	95109	4	Clevis Pin Clip
28		1	3/8 x 3/4 Socket Hd.
29	80650	1	7/8-14 Nut NFT.
	95192	1	Packing Kit 3.75 x 1.38





Parts Listing

Section 5

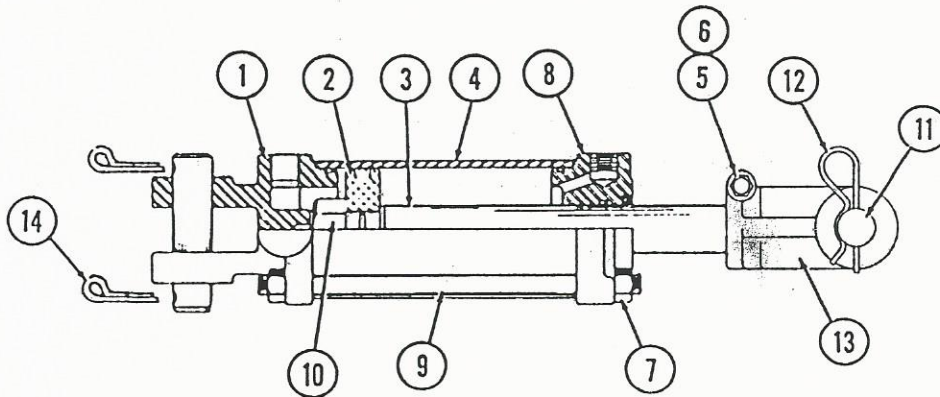
REPAIR PARTS FOLDING CYLINDERS

Parts for 3 x 24 Cyl. #91007
(For Units With Narrow Wings)

Parts for 3-1/2 x 24 Cyl. #91015 *
(For Units With Wide Wings)

ITEM NO.	PART NO.	QTY	DESCRIPTION	ITEM NO.	PART NO.	QTY	DESCRIPTION
1	95044	1	Butt 3.00 L	1	95193	1	Butt 3.50 L
2	95063	1	Piston 3.00 L	2	95197	1	Piston 3.50 L
3	95071	1	Rod 1.50 x 24.00 L	3	95198	1	Rod 1.50 x 24.00 L
4	95046	1	Barrel 3.00 x 26.09	4	95194	1	Barrel 3.50 x 26.09
5	80570	1	3/8" Hex Nut	5	80570	1	3/8" Hex Nut
6		1	3/8" x 1-3/4" Skt. Hd. Bolt	6		1	3/8" x 1-3/4" Skt. Hd. Bolt
7	81702	8	7/16 Hex Nut	7	81702	8	7/16" Hex Nut
8	95053	1	Gland 3.00 x 1.50 L	8	95195	1	Gland 3.50 x 1.50 L
9	95059	4	Tie Rod .44 x 28.75	9	95196	4	Tie Rod .50 x 29.25
10		1	1-14 Lock Nut (NFT)	10		1	1-14 Lock Nut (NFT)
11	95018	1	Clevis Pin Assy (3.00")	11	95199	1	Clevis Pin Assy (3.00")
12	95109	2	Clevis Pin Clip	12	95201	2	Clevis Pin Clip
13	95022	1	Clevis 1.00 - 14 THD	13	95199	1	Clevis 1.00 - 14 THD
14	81354	2	5/32 x 2 Cotters	14	81354	2	5/32 x 2 Cotters
	95021	1	Packing Kit 3.00 x 1.50 L		95200	1	Packing Kit 3.50 x 1.50 L

* Note, 91008 was used prior to 1991



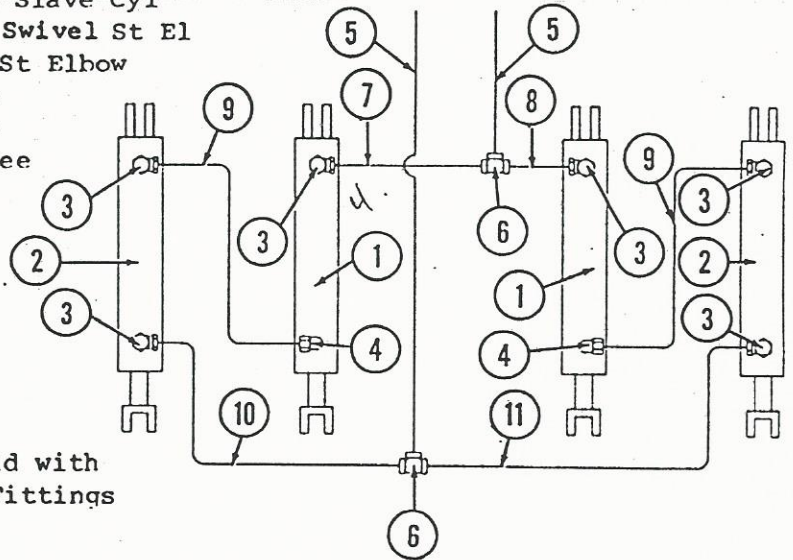


Parts Listing

Section 5

LIFTING HOSES & FITTINGS

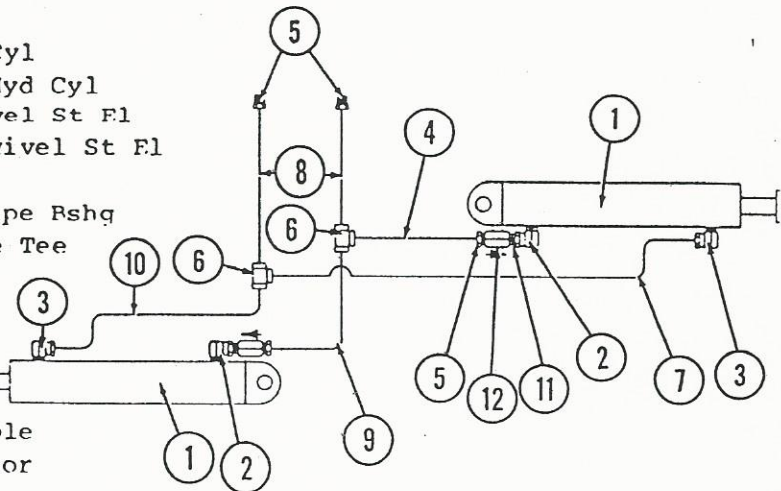
ITEM NO.	PART NO.	QUANTITY USED		DESCRIPTION
		NARROW	WIDE	
1	92021	2	2	4 x 8 Slave Cyl w/Stroke Control
2	92022	2	2	3-3/4 x 8 Slave Cyl
3	94514	6	6	1/2" NPT Swivel St El
4	94511	2	2	1/2" NPT St Elbow
5	94109	2		139" Hose
	94112	2		156" Hose
6	94518	2	2	1/2 NPT Tee
7	94100	1	1	*50" Hose
8	94130	1	1	*38" Hose
9	94102	2		*72" Hose
	94104		2	*84" Hose
10	94105	1		*96" Hose
	94107		1	*112" Hose
11	94106	1		*108" Hose
	94108		1	*128" Hose



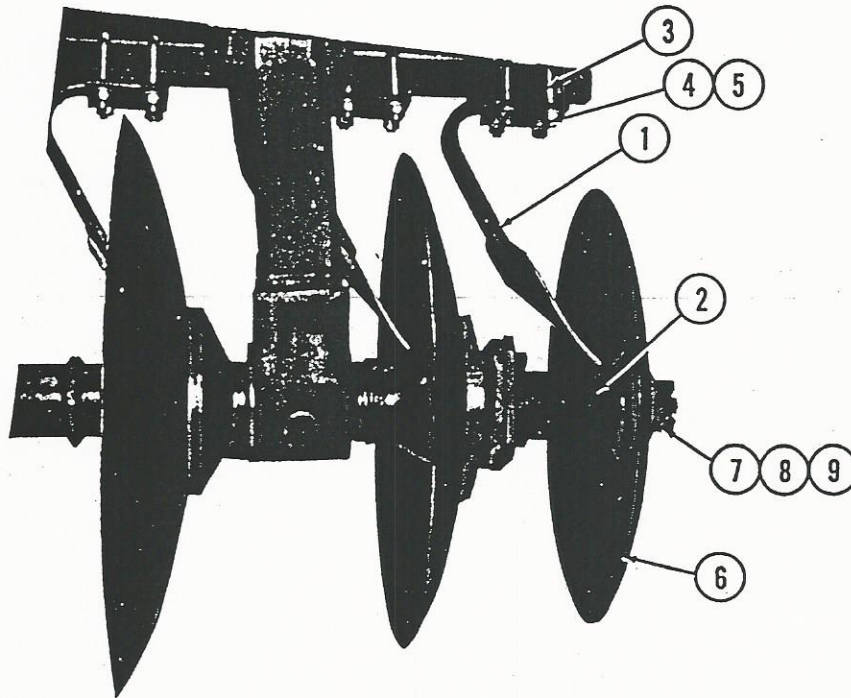
*Lifting Hoses are 3/8" double-braid with 1/2" rigid, external pipe thread Fittings

FOLDING HOSES & FITTINGS

ITEM NO.	PART NO.	QUANTITY USED		DESCRIPTION
		NARROW	WIDE	
1	91007	2		3 x 24 Hyd Cyl
	91015		2	3-1/2 x 24 Hyd Cyl
2	94514	2	2	1/2 NPT Swivel St Fl
3	94517	2	2	3/8 x 1/2 Swivel St Fl
4	94201	1	1	*33" Hose
5	94507	4	4	1/2 x 3/8 Pipe Rshg
6	94504	2	2	3/8 NPT Pipe Tee
7	94206	1	1	*55" Hose
8	94224	2		*204" Hose
	94228	2		*222" Hose
9	94212	1	1	*76" Hose
10	94214	1	1	*96" Hose
11	94510	2	2	1/2" NPT Nipple
12	96004	2	2	Flow Restrictor



*Folding Hoses are 1/4" wire braid with



COVER DISK PARTS

ITEM NO.	PART NO.	QTY	DESCRIPTION
1	20700	1	Rt Cover Disk Scraper
	20699	1	Lt Cover Disk Scraper (Shown)
2	17126	2	Cover Disk Mtg Assy
3	20677	2	Scraper U-Bolt
4	80864	4	1/2" Locknut
5	81000	4	1/2" Lock Washer
6	18693	2	Cover Disk, 16" for 22" Disks
	15985	2	Cover Disk, 18" for 24" Disks
7	17117	2	Cover Disk End Washer
8	80870	2	3/4" Locknut
9	81190	2	3/4" Flat Washer